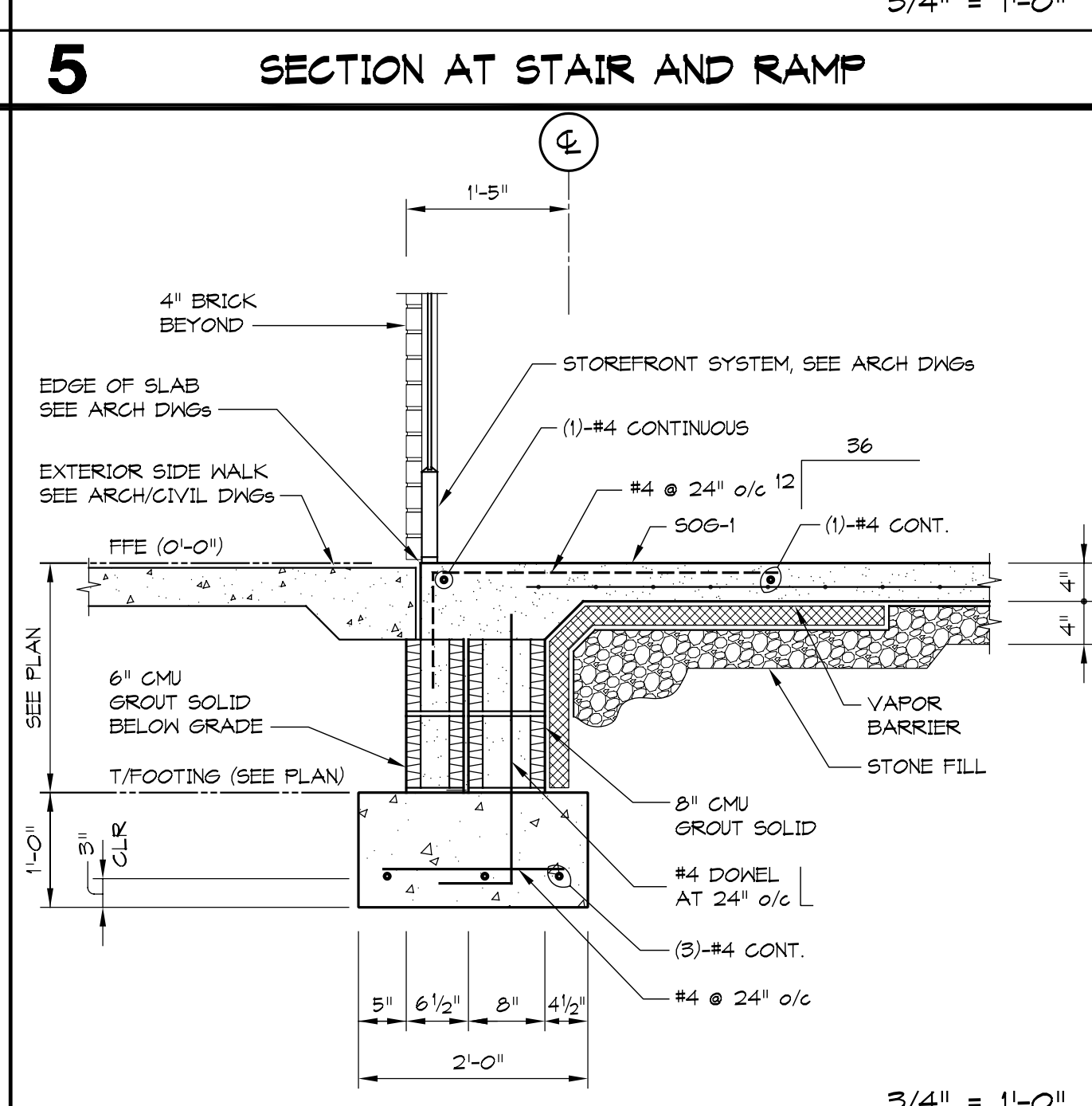
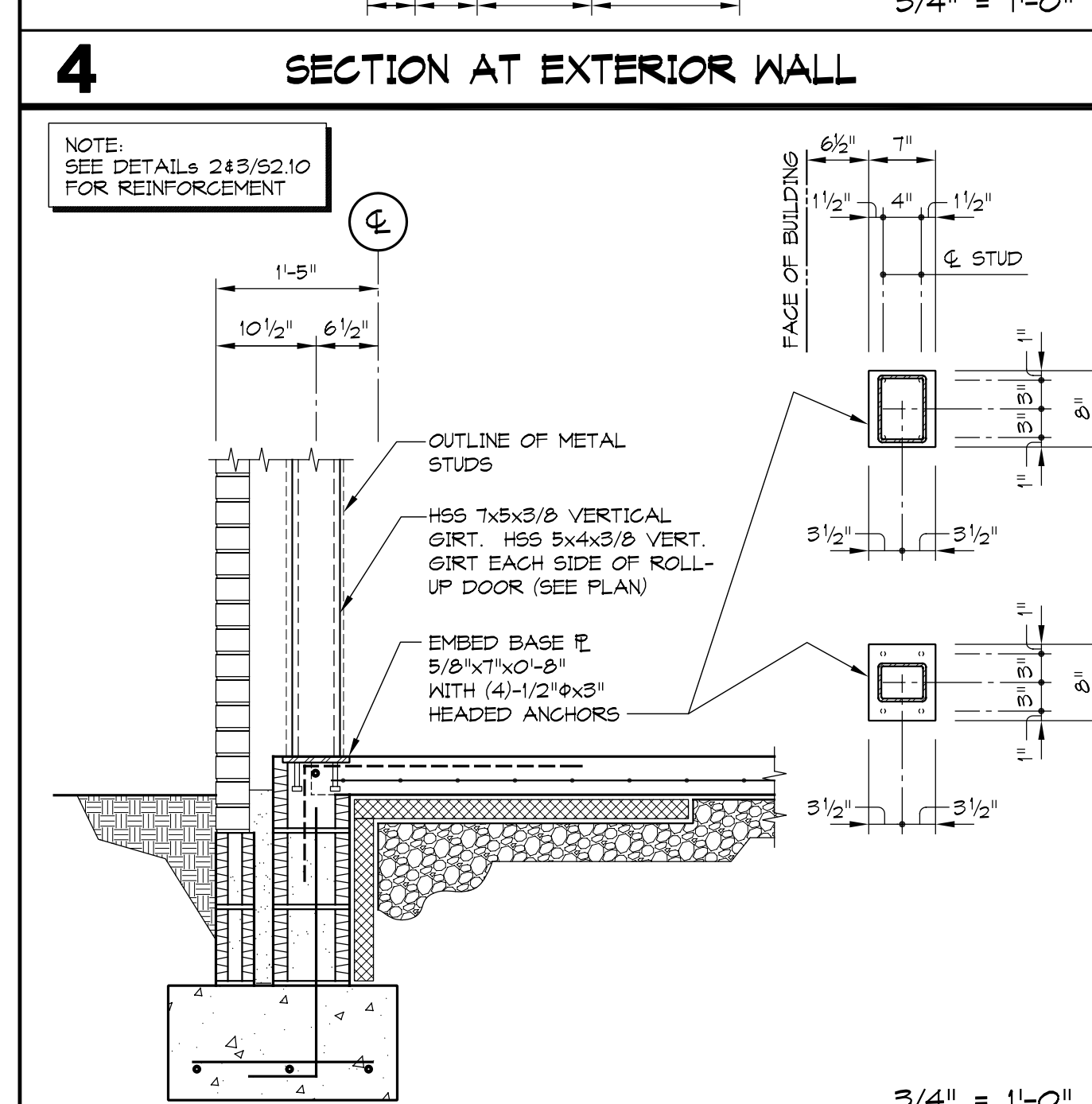
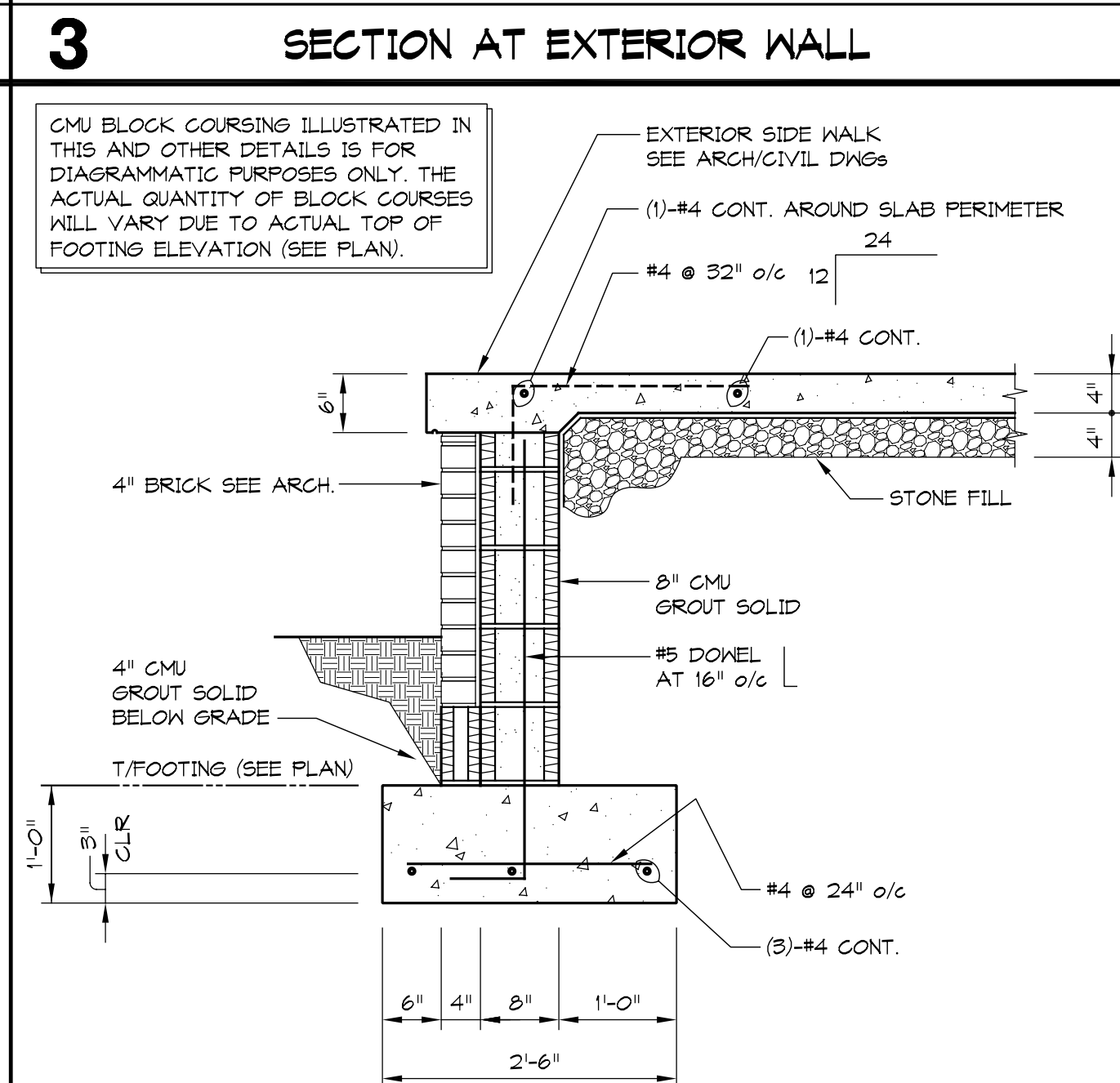
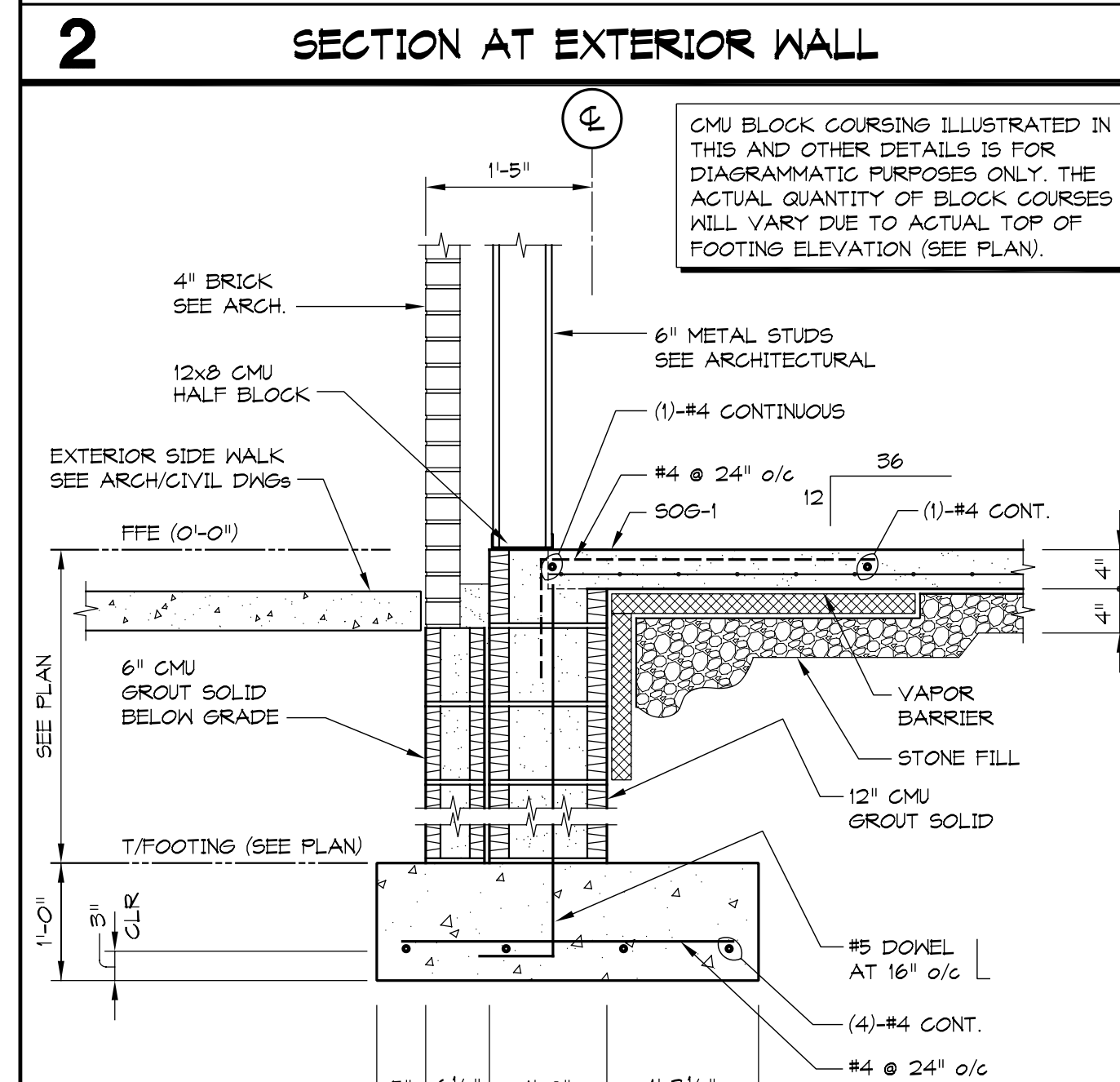
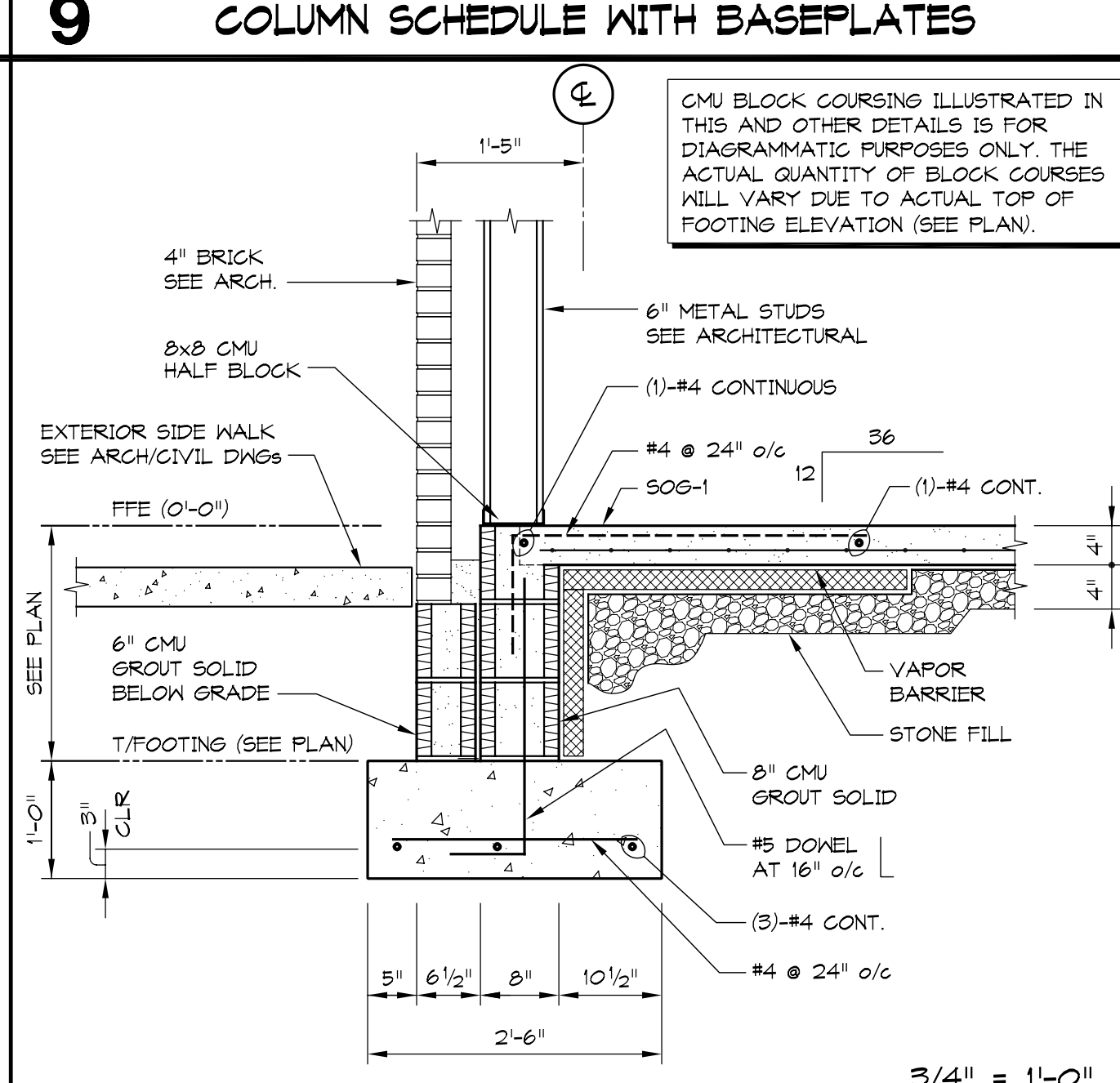
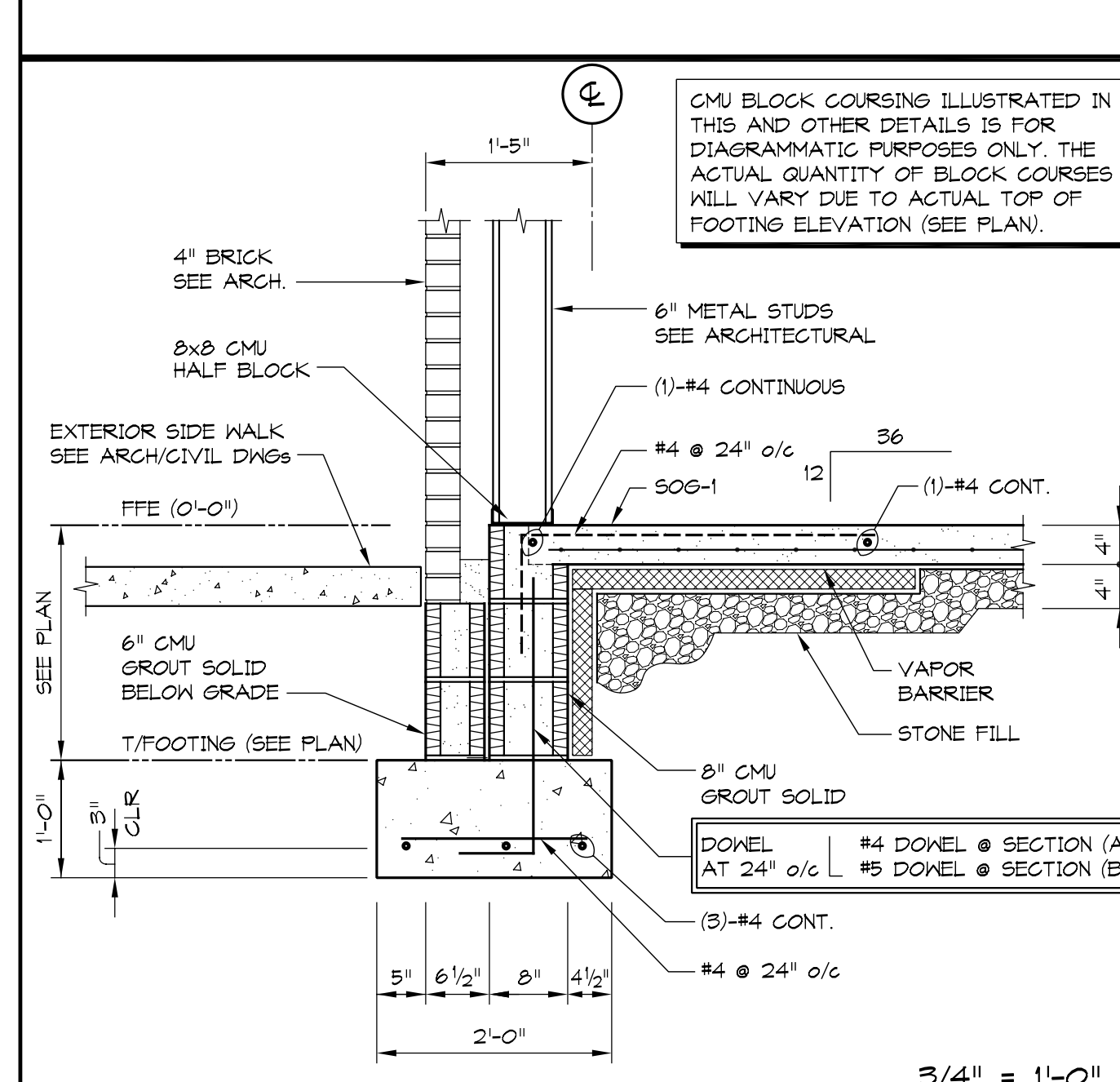
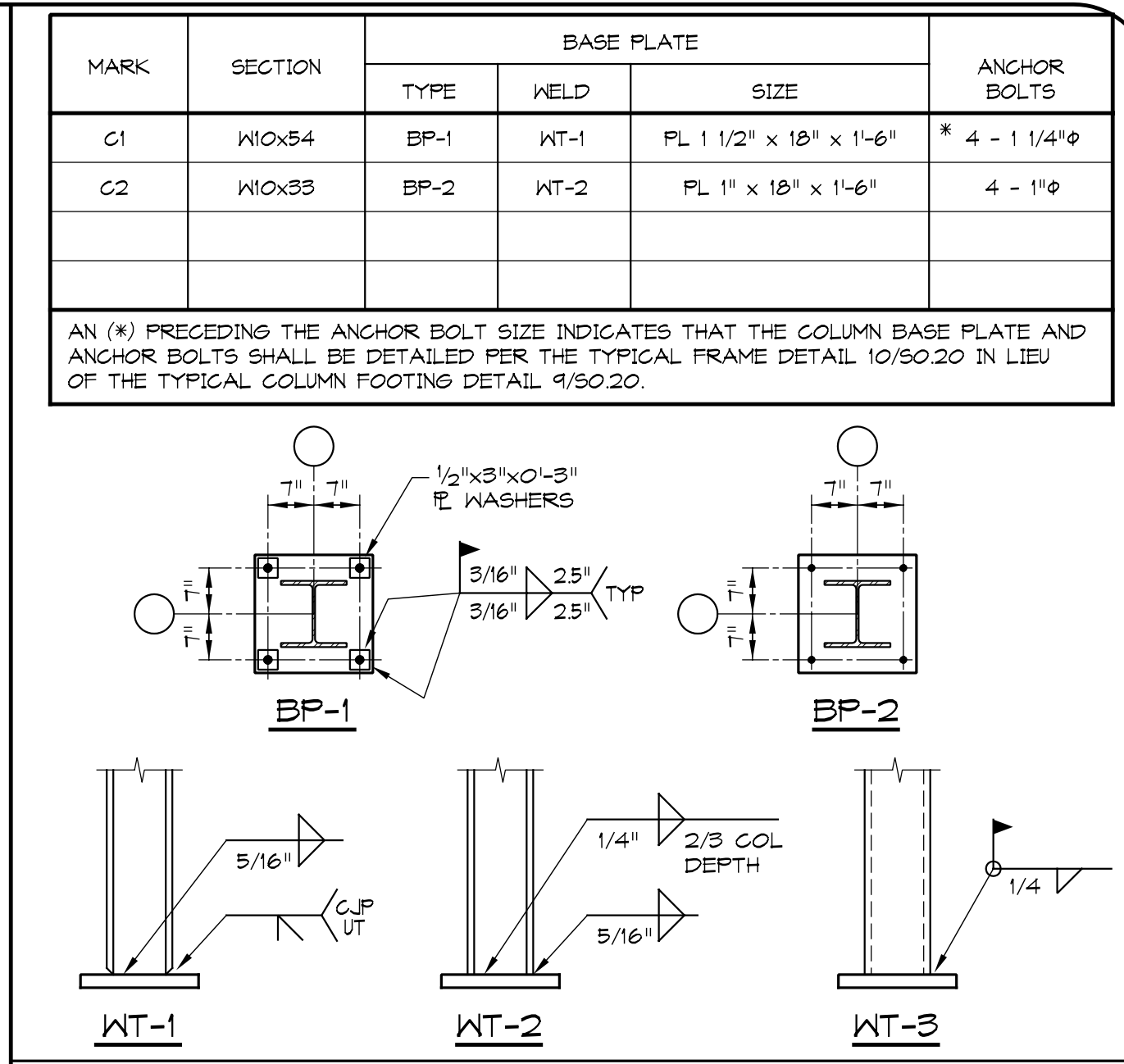


- FOUNDATION PLAN NOTES**
1. ACTUAL FINISHED FLOOR ELEVATION IS 164.00'. REFERENCED FINISHED FLOOR ELEVATION IS 0'-0'.
 2. TOP OF EXTERIOR FOOTING ELEVATIONS ARE 2'-0" BELOW FINISHED FLOOR ELEVATION 0'-0' UNLESS NOTED OTHERWISE.
 3. TOP OF INTERIOR FOOTING ELEVATIONS ARE 1'-4" BELOW FINISHED FLOOR ELEVATION 0'-0' UNLESS NOTED OTHERWISE.
 4. TYPICAL FLOOR SLAB-ON-GRADE (SOG) CONSTRUCTION UNLESS NOTED OTHERWISE.
 - SOB-1 (TYPICAL): 4" CONCRETE SLAB, 6x6 - 1/4"x1/4" W/F (IN FLAT SHEETS), 4" STONE FILL.
 - SOB-2 (MECH-PAD): 6" CONCRETE SLAB, 8x8 @ 12" o/c (USE CHAIRS FOR REBAR SUPPORT), 4" STONE FILL.
 5. SEE ARCHITECTURAL DRAWINGS FOR EXTENT OF SIDEWALKS AND PERIMETER CONCRETE SLABS.
 6. SEE ARCHITECTURAL DRAWINGS FOR DIMENSIONAL LOCATIONS AND SIZED OF ALL MASONRY AND WALL OPENINGS.
 7. - INDICATES FOOTING MARK. SEE SCHEDULE, SHEET S1.10.
 8. - INDICATES STEEL COLUMN MARK. SEE COLUMN SCHEDULE, 9/50.20 & 10/50.20.
 9. - INDICATES CONCRETE PIER MARK. SEE DETAIL, 8/51.10 (TOP OF PIERS -1'-0" BELOW FFE).
 10. SF - INDICATES STEP FOOTING DETAIL. SEE DETAIL 3/50.20.
 11. - INDICATES SOIL BORING LOCATION.
 12. NO PIPE SHALL PENETRATE OR BE CAST INTO CONCRETE FOOTINGS. PIPES SHALL PENETRATE STEM WALLS OR BE INSTALLED UNDER ISOLATED AND CONTINUOUS FOOTINGS.



RAMSAY BURGIN SMITH ARCHITECTS

225 NORTH MAIN STREET - SUITE 501
SALISBURY, NORTH CAROLINA 28144
Phone: (704) 633-3121 Fax: (704) 633-5361
Email: rbs@rbsarch.com (www.rbsarch.com)

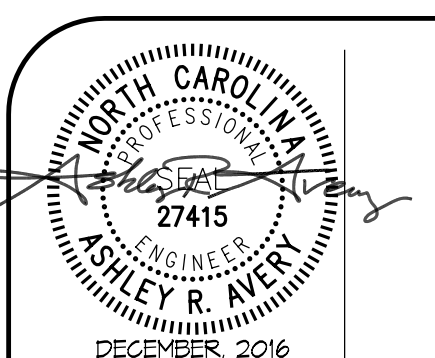
PUBLICATION OR REUSE OF THESE DRAWINGS OR ANY DETAILS THEREFROM MUST BE WITH THE WRITTEN CONSENT OF THE ARCHITECT

ABS
APPLIED BUILDING SCIENCES, INC.
ENGINEERS, ARCHITECTS AND ENVIRONMENTAL CONSULTANTS
120 GREENWICH ROAD
CHARLOTTE, NORTH CAROLINA 28211
OFFICE: (704) 749-3545 FAX: (704) 362-3178

FOUNDATION PLAN AND DETAILS

Rowan/Kannapolis
ABC STORE &
WAREHOUSE

SALISBURY
NORTH CAROLINA



SHEET NO.
S1.10
3 OF 4